



# YP Southeast Family Reopening Orientation



IN SCHOOLS AND IN  
CLASSROOMS, TOGETHER  
WE KEEP EACH OTHER SAFE.



Create a  
**SAFE COVID  
READY**  
culture

# AGENDA

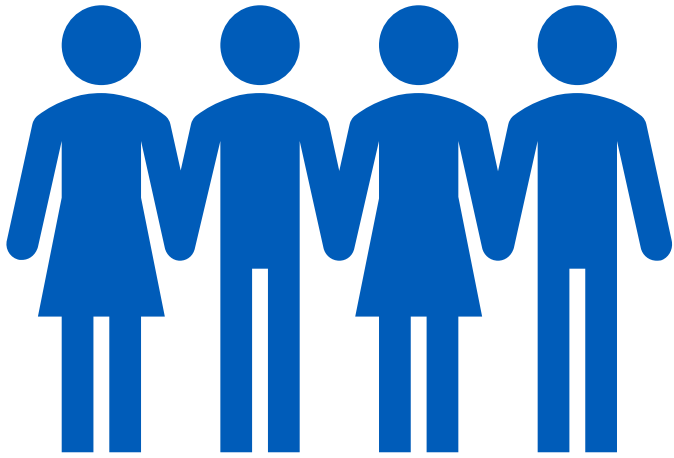
Campus Safety  
Measures

Information and  
Actions for  
Families

Information and  
Expectations for  
Students

Classroom  
Learning

# Mindsets



Safety above all. This may mean that policies and procedures may be slow or inconvenient.

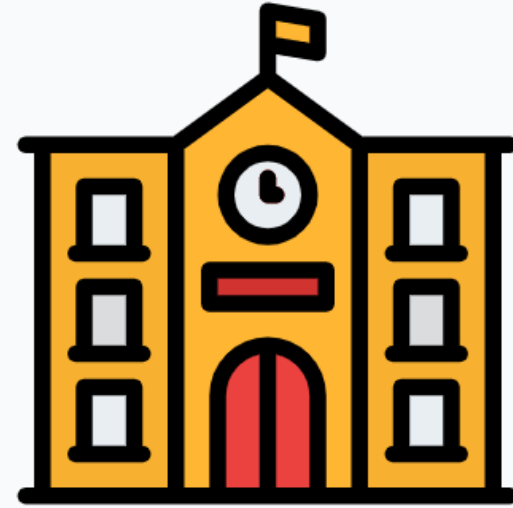


Schooling during a pandemic is new for all of us, and we will adjust plans as we learn more.



We will treat each other with kindness and patience, because we all have the same goal.

What will  
Southeast do to  
keep our school  
safe?





# Personal Protective Equipment (PPE)



# PPE & Safety Expectations

Temperature and mask checks prior to entering the building.

Supplies in every classroom: sanitizer, disinfecting wipes, extra PPE.

Signs are posted around campus to remind students, staff, and visitors of safety procedures.

# Classroom Safety and Sanitization





# Classroom Safety & Sanitization



All students will sanitize hands upon entering the building and every time exiting and entering a common space.



Students will wipe down devices and workspaces as needed with disinfectant wipes.

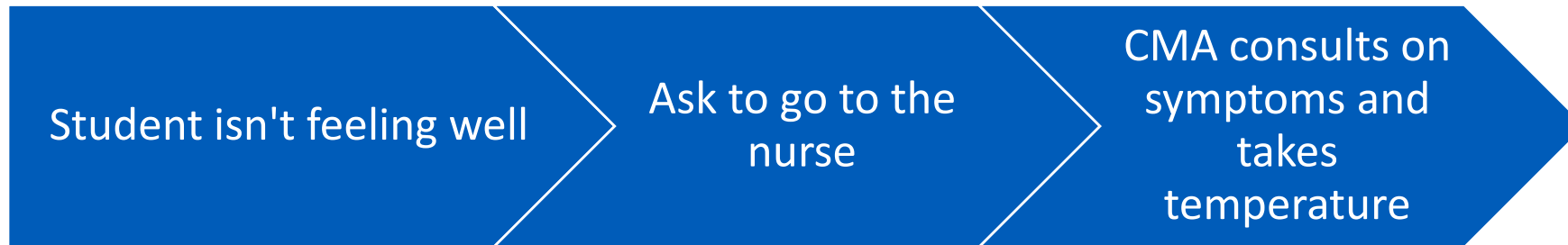


All student tables have clear plexiglass dividers to allow for no more than four student per a table.



Building will be cleaned throughout the day and germ blasted every night

# Nurse Procedures



Fever, No COVID symptoms	NO fever and NO COVID symptoms	COVID Symptoms
Call home for parent to pick up	Rest for 15 minutes and send back to class	<ul style="list-style-type: none"><li>• Check with Legacy for consent</li><li>• Call home</li><li>• Refer to Legacy with consent</li></ul>

# Legacy Community Health



# Sign Up For Legacy Services!

- You can utilize our district partners, Legacy, to sign up for healthcare services if needed

## School-Based Health Care Right From Your Home!

Well-child visits, sick visits, counseling  
for anxiety, depression, behavioral  
problems, and more!

## ¡Atención de Salud Basada en las Escuelas Desde Su Hogar!

Consultas de examen anual, por enfermedad,  
consejería para la ansiedad, depresión,  
problemas de comportamiento, y mas!



# YES Prep is committed to keeping you and your family and our community safe. We will:

- Send a notification to the school community to inform everyone that there is a positive case.
- Post campus data regarding positive cases on the district website.
- Contact you directly if your student was in close contact with a positive case.

Be  
Transparent



- Call the families of any student who had direct contact with the individual who tested positive, without sharing confidential information.
- Keep your information confidential.

Respect  
Privacy



- Protect the safety of the school community by following all CDC Health and Safety Guidelines.

Follow CDC  
Guidelines





# What Will Families Do To Keep Our School Safe?

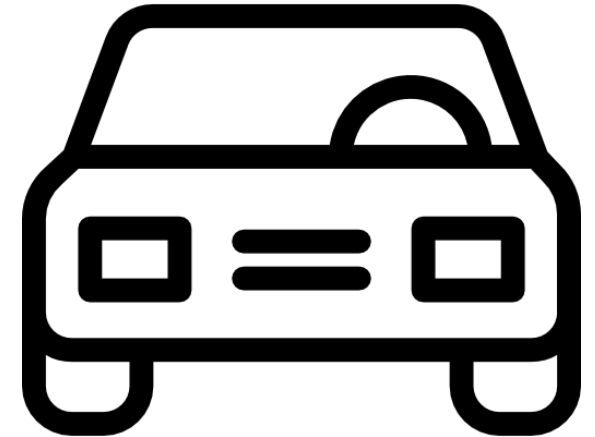


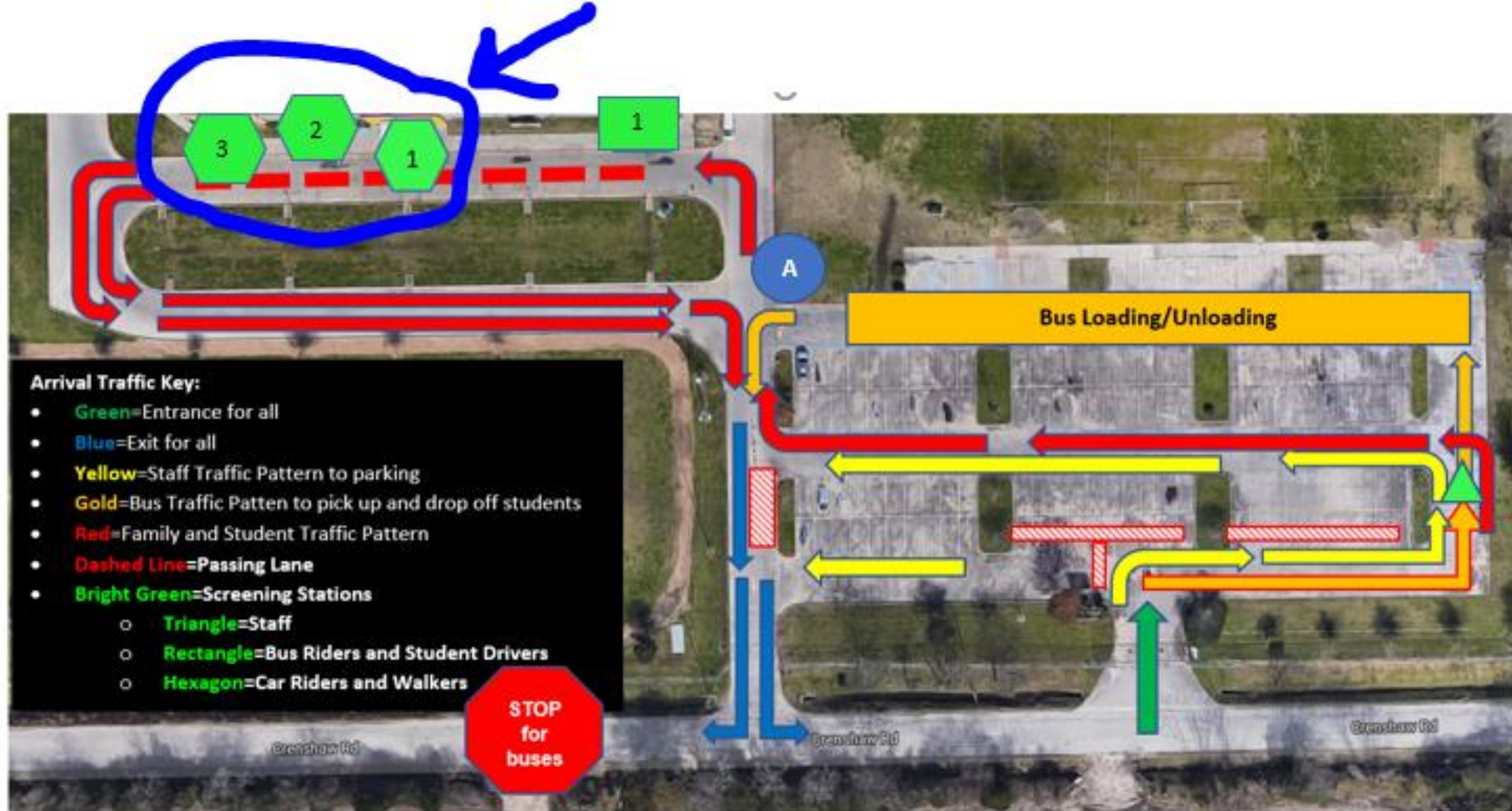
# Arrival and Dismissal Procedures



# Student Arrival and Screening

Car Rider and Walkers	
Entrance	Double Union Doors
Temperature Checks	Students with a temperature above 100F will NOT be allowed to leave their vehicle and enter campus.
Screening Completion	After students are approved to exit their vehicle, students head straight to the Union entrance to be checked for mask and sanitize hands.







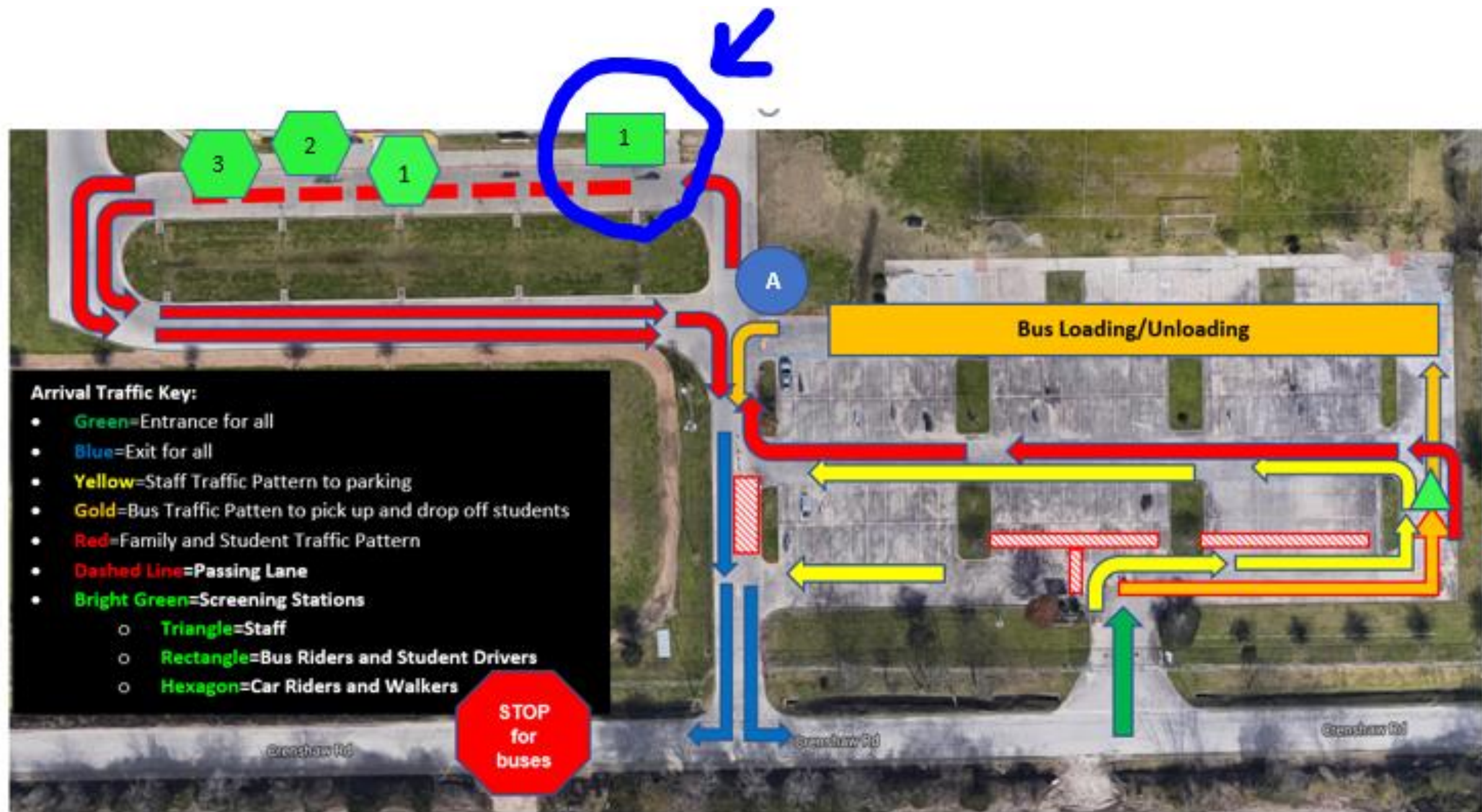
# Student Arrival and Screening

## Bike Riders, Student Drivers and Bus Riders

<b>Entrance</b>	Gym Doors
<b>Temperature Checks</b>	Students with a temperature above 100.00 will NOT be allowed to stay on campus. Students will head straight to quarantine location (Rm 101) and call home to be picked up or given permission to ride their bike. Student Drivers should leave in arrival vehicle.
<b>Screening Completion</b>	After temperatures are checked, students head straight to the gym entrance to be checked for mask and sanitize hands.









# Student Arrival and Screening

- **Students should not arrive prior to 8 AM**
- Students cannot get out of vehicle until they are screened.
- Masks are worn upon exiting vehicle until they enter vehicle again that afternoon.
- Students are not using lockers and should proceed straight to class.
- Social Distancing should still be followed as you enter the building and on the way to class.
- This process will take time in order to maintain safety. Please plan accordingly.



# Dismissal Process: Walkers, Bike Riders, Student Drivers

**Masks must be worn while waiting for dismissal.**

## Walkers

**3:45 PM**

Dismissed to exit through front lobby

## Bike Riders

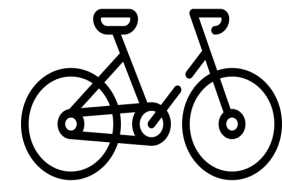
**3:45 PM**

Dismissed to exit through Union double doors

## Student Drivers

**3:45 PM**

Dismissed to exit through gym double doors



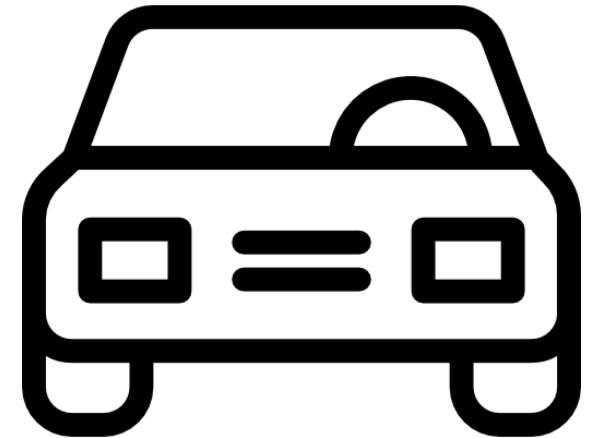
# Dismissal Process: Car Pick-up

**Masks must be worn while waiting for dismissal.**

## Car Riders

**3:50 PM**

- Students remain in their classroom.
- Families arrive with a sign displayed in their car that clearly indicates their family number.
- A staff member will radio the front office with the families that are ready to pick up students.
- Family numbers will be announced over the intercom.
- Students will proceed to the double doors in the Union to exit the building and head straight to their cars.



# Dismissal Process: Bus Riders

**Masks on while waiting for dismissal and on the bus.**

## **Bus Riders**

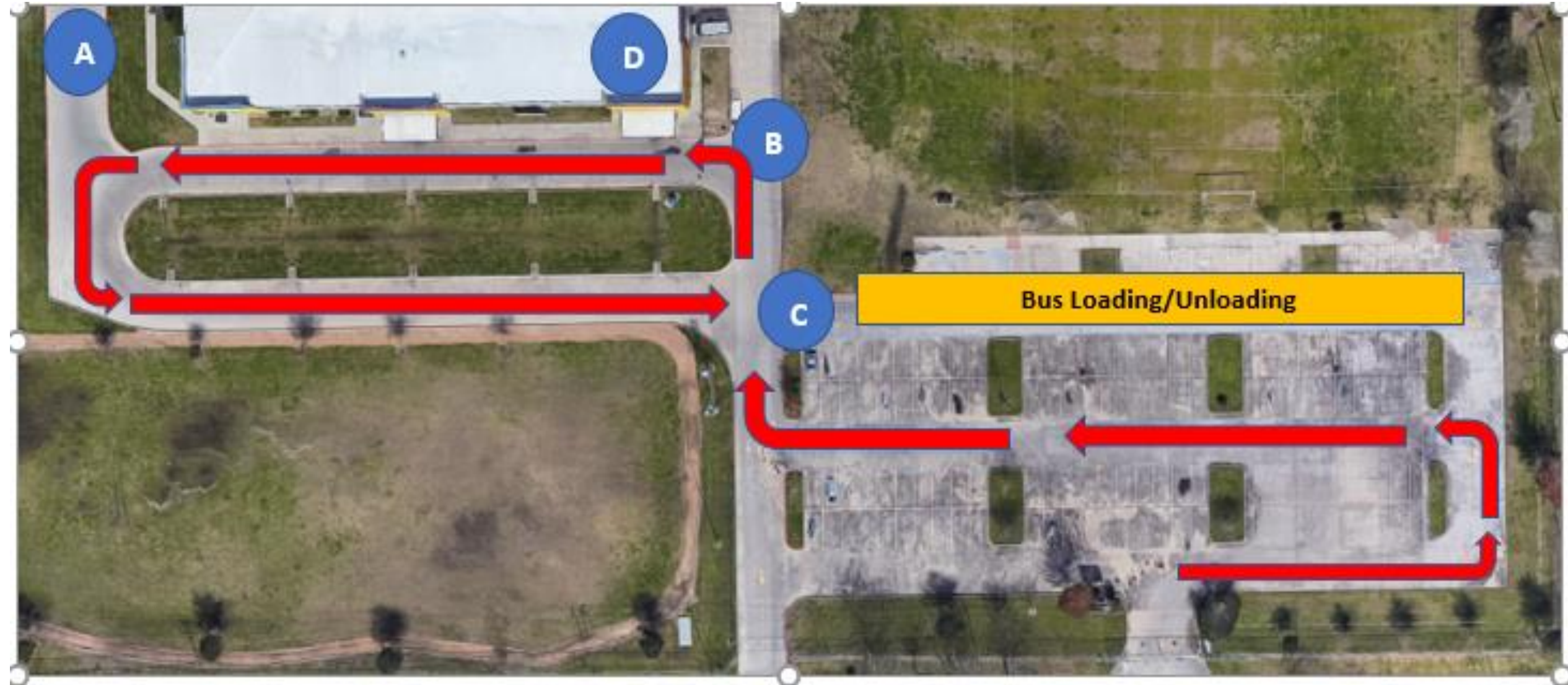
**4:00 PM**

- Students remain in their classroom.
- As buses arrive, the bus route will be announced on the intercom for students.
- Students will proceed to exit through the double gym doors to exit the building and head straight on the bus.
- Students load from back to front and sit in same seat.





# Dismissal Process





# Masks and Distancing Expectations

# Masks and Distancing Expectations

Students and staff are expected to wear a mask at all times while in the building.

If you forget your mask for the day, a disposable one will be provided.

All those in the building are asked to maintain 6ft of distance when possible.

Only 3 people are allowed in the elevator at a time.



# Mask Expectations

## DO choose masks that



Have two or more layers of washable, breathable fabric



Completely cover your nose and mouth



Fit snugly against the sides of your face and don't have gaps

## DO NOT choose masks that



Are made of fabric that makes it hard to breathe, for example, vinyl



Have exhalation valves or vents, which allow virus particles to escape



Are intended for healthcare workers, including N95 respirators or surgical masks

# Mask Expectations

## Caution: Gaiters & Face Shields



Evaluation is on-going but effectiveness is unknown at this time



Evaluation is on-going but effectiveness is unknown at this time

## Special Situations: Glasses



If you wear glasses, find a mask that fits closely over your nose or one that has a nose wire to limit fogging

Do wear a mask that

- Covers your nose and mouth and secure it under your chin
- Fits snugly against the sides of your face

For more information, visit our [How to Wear Masks](#) web page.



Do NOT wear a mask

## Do NOT wear a mask



Around your neck



On your forehead



Under your nose



Only on your nose



On your chin



Dangling from one ear



On your arm

## How to Clean

Masks should be washed regularly. Always [remove masks correctly](#) and [wash your hands](#) after handling or touching a used mask.

- Include your mask with your regular laundry
- Use regular laundry detergent and the warmest appropriate water setting for the cloth used to make the mask
- Use the highest heat setting and leave in the dryer until completely dry

For more information, visit our [How to Wash Masks](#) web page.





# Home Safety Checks





# Home Safety Checks

- Be alert for symptoms of COVID-19 such as fever, cough, and shortness of breath
- Take your temperature if symptoms develop
- Wash your hands often with soap and water for at least 20 seconds
- Clean and disinfect frequently touched surfaces daily
- Practice social distancing keeping 6 feet of distance between yourself and people who don't live with you
- Wear a mask if you're out in public



# Supporting Your Student



# Supporting Your Student

## Before they leave for school:

- Remind them to follow safety and social distancing guidelines
- Make sure they pack their masks in the morning along with their charged computer and other materials
- Make sure they have a water bottle and a lunch if they don't plan to eat the school-provided lunch





# Supporting Your Student

## When they arrive at home:

- Ask them to wash their hands
- Encourage them to change their clothes
- Only wear clothes once and wash them
- Wipe down school supplies
- Ensure they have clean clothes ready for the next day
- Remind them to charge their device before they go to bed



# Supporting Your Student

## In preparation for your student to start school in person:

- Ensure your student has a mask and backup masks
- Encourage them to practice wearing their mask around the house for a long period of time
- Practice washing hands for 20+ seconds
- Buy them a personal size hand sanitizer
- Buy any necessary school supplies
- Align on the process for when they arrive at home





# What Will Students Do To Keep Our School Safe?

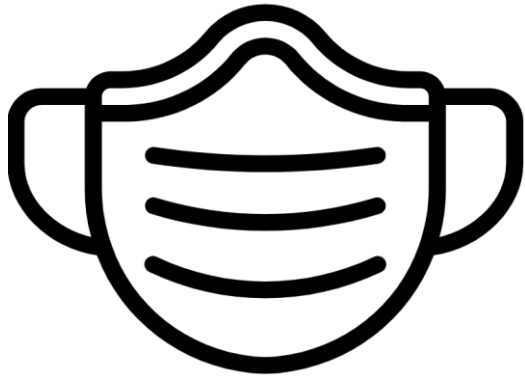




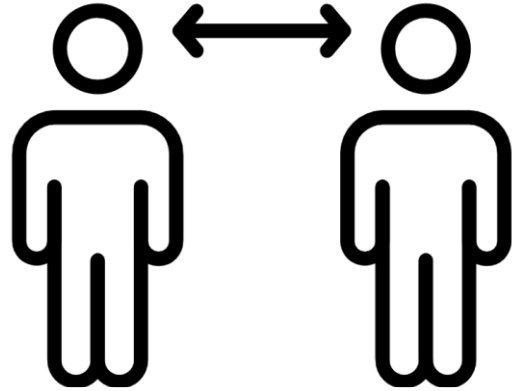
# Safe Student Culture and Behavior Expectations



# Safe Student Culture and Behavior Expectations



**Always wear a mask** or over your nose and mouth.



**Socially distance** and stay at least 6 feet apart from others to respect each other's space.



**Stay home when you are sick** (temperature of 100+ degrees Fahrenheit), except to get medical care.



**Wash your hands** with soap and water for at least 20 seconds and use hand sanitizer often.

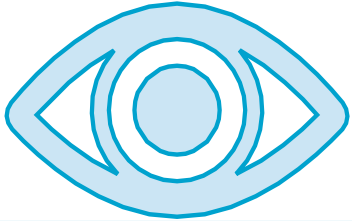
Keep Southeast Safe and Well by following the Covid-19 Protocols!

# Actions for Increased **Safety** in all Campus Spaces



## Safe Hands, Body, and Technology

- Students will **keep their hands and bodies to themselves**.
- Students will **wear their mask** at all times except when they are eating.
- Students will practice **social distancing** whenever possible.



## Focus on Community Learning

- Students will **follow the directions** of teachers and leaders.
- Students will **use self-control** to not disrupt the learning environment.



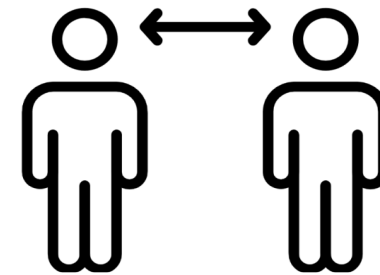
## Kind Words and Actions

- Students will communicate with peers and staff **using neutral kind words** and **appropriate language**.
- Students will **act in a neutral or kind way** towards peers and staff.



## Social Distancing Expectations at School

- Put 6 feet of distance between yourself and people who don't live in your household.
- Remember that some people without symptoms may be able to spread virus.
- Stay at least 6 feet (about 2 adult arms' length) from other people.
- Keeping distance from others is especially important for people who are at higher risk of getting very sick.



# Student Expectations and Consequences

- Throughout the first week of school, we will go over these expectations with students.
- Our staff will be direct and respectful when asking a student to comply with a safety measure.
- If a student is behaving in a way that impacts the safety of the classroom, they will be taken to a “cool down” space. If they are unable to meet our safety expectations, parents will be called.
- Even though our safety rules may not be fun or comfortable, they are in place for a reason, and all students who want to learn in person will need to follow them.

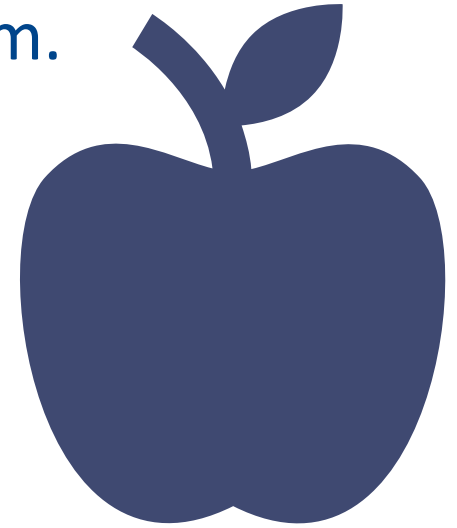




# Breakfast and Lunch Expectations

# Breakfast & Lunch Expectations

- All students have access to free breakfast and lunch.
- Breakfast will be “grab and go” and will be eaten in the classroom.
- Wash or sanitize your hands before and after all meals.
- Students may remove their mask to eat. We ask that students refrain from talking while eating to stop the spread of germs.
- Students may bring a packed lunch but will not have access to microwaves.
- No lunch deliveries from family members or outside vendors (UberEats, etc.)
- Students may not share food or drinks.



# Other Expectations



# General Restroom Expectations

- Teachers will review how students should ask to use the restroom in classes.
- Students will receive a disposable pass.
- Administrators will be working in the hallway to monitor.
- No more than 3 students at a time, since there are 3 stalls and 3 sinks.
- Please take only the time you need so others may go.
- Students must wash their hands before exiting the restroom.
- Once students return to class, they must sanitize their hands with hand sanitizer after they dispose their restroom pass.
- Reminder: Students should wear a face mask or shield while using restrooms, and will not be able to use water fountains.



# Uniforms

- All YES Prep uniform expectations are waived for the **first semester**. Students will follow the campus free dress policy.
- All masks must have appropriate language, symbols etc.
- **Free Dress Expectations:**
  - T-shirts, polos, sweaters, and sweatshirts with appropriate language and words
  - No sleeveless or strapless tops, no bare midriffs
  - Jeans or khaki pants, shorts, or skirts of appropriate length with no holes, rips or tears
  - Closed toe shoes or sneakers only. No sandals, open-toed shoes, slippers, slides, or crocs.
  - No hats or head-coverings except for religious purposes

# How We Will Keep Your Student Learning

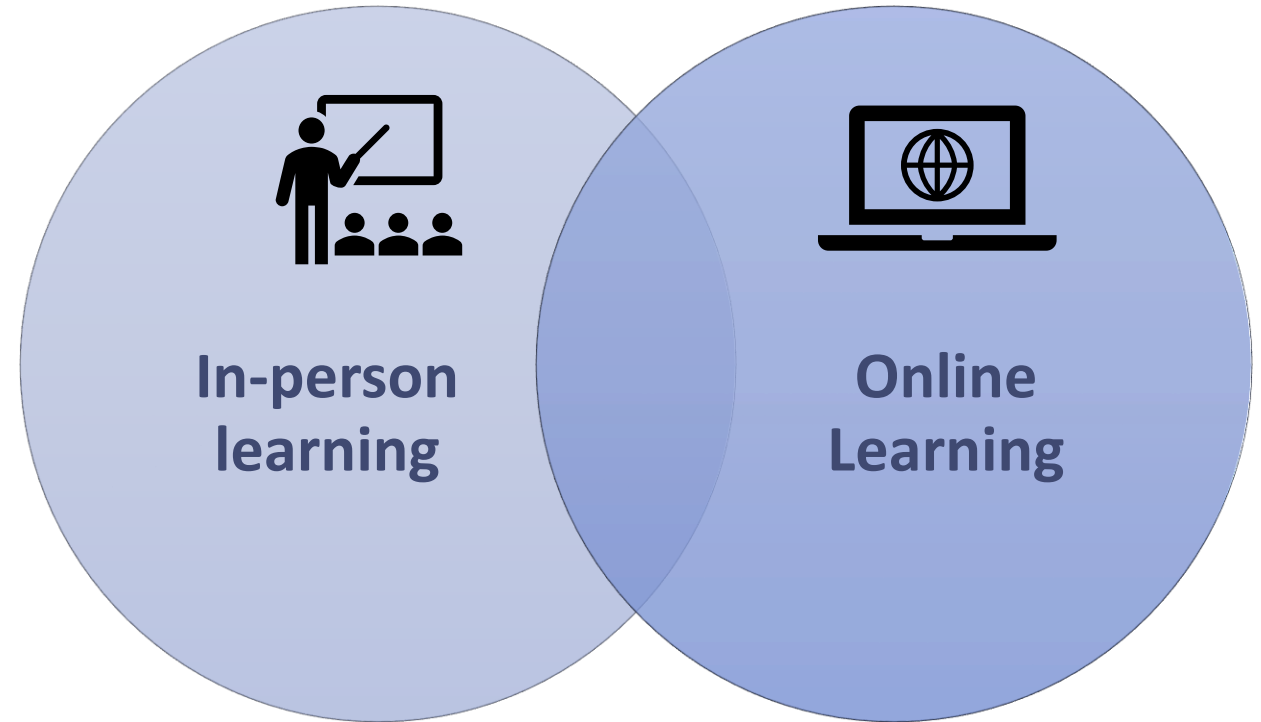


# Online v. At School

	What is the schedule?	Where will I complete assignments?	Where will I complete summative assessments?	What will happen in the beginning of the period?	What will happen at the end of the period?	
Online at Home	Secondary Schedule		Microsoft Teams and O365 Platforms	Aware	<i>Synchronous</i> Whole class instruction delivered via Microsoft Teams meetings	<i>Asynchronous</i> Independent and/or Small Group Work
	Time	Activity				
	8:30 – 10:10	Homeroom and Block 1				
	10:15 – 11:45	Block 2				
	11:50 – 12:35	Lunch/ Advisory				
	12:40 – 2:10	Block 3				
	2:15 – 3:45	Block 4				
At School	Secondary Schedule		Microsoft Teams and O365 Platforms	Aware	Whole class instruction (usually delivered by the teacher in the classroom)	Independent and/or Small Group Work
	Time	Activity				
	8:30 – 10:10	Homeroom and Block 1				
	10:15 – 11:45	Block 2				
	11:50 – 12:35	Lunch/ Advisory				
	12:40 – 2:10	Block 3				
	2:15 – 3:45	Block 4				

# What is Blended Learning?

- The in-person, at school academic program we will be using is called *Blended Learning*.
- Blended Learning is a model in which students participate both in-person and using online platforms.
- Blended Learning requires all students to bring a functioning device to school each day.





# Materials Needed

- 2 Masks
- Writing utensils (pencils & pens)
- Notebooks
- Personal Supplies
- Personal hand sanitizer
- Water bottle(s)
- 1:1 Device (Laptop, Tablet, Chromebook) and Charger
  - Ensure you charge your device every night
- Headphones
- Student ID
- Books for your assigned courses



# Questions and Survey

- Parent Survey: Reopening Questions - [Click here](#)

- Important Links to Visit:

<https://southeast.yesprep.org/>

<https://southeast.yesprep.org/reignited>

<https://southeast.yesprep.org/for-parents/back-to-school>

<https://southeast.yesprep.org/for-parents/family-notes>



LEADING HOUSTON FORWARD

▶ REIGNITED ◀